

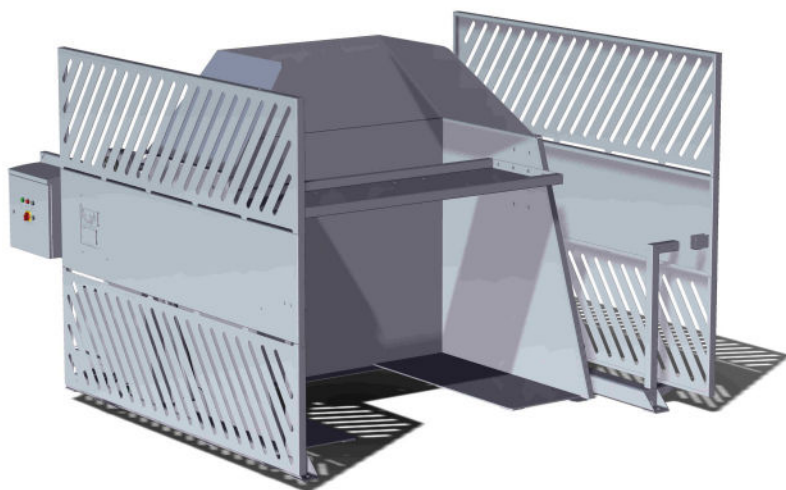
Box Tipper

Description

The Watson & Brookman Box Tipper uses twin hydraulic rams to provide a consistently smooth tipping motion.

Push button operation with hydraulic pump cut-out timer for improved energy efficiency.

When used with a Watson & Brookman Bulk Hopper, the Tipper can provide steady and even flow, regardless of product.



Construction

Fully stainless steel construction as standard. Heavy duty materials ensure that this machine is suited to the most robust of environments.

Side mesh guards prevent access to the hydraulic rams while in use.

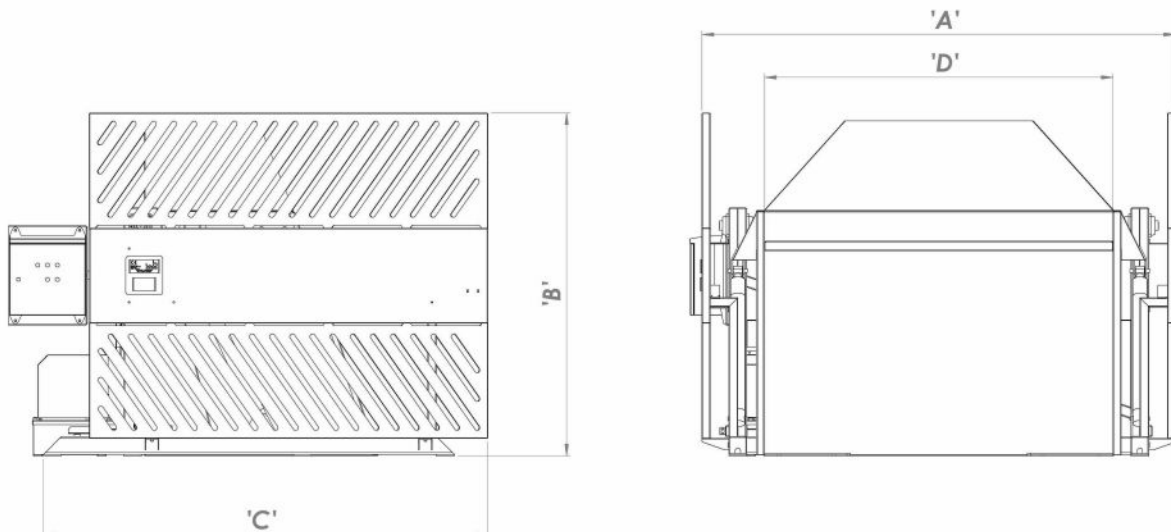
Light guards linked to the stop circuit halt the operation when the light beam is broken.

Technical Specification

	1950	1400	850
Box Size	1950	1400	850
Power Consumption	2.2Kw	2.2Kw	0.55Kw
Dimension (LxWxH)	2485x2650x1908	2220x2080x1593	1795x1395x1493
Materials	Stainless steel bead blasted. Bearings Stainless Steel.		

Dimensional Drawing

	1950	1400	850
Dim A	2650	2080	1395
Dim B	1908	1593	1493
Dim C	2485	2220	1795
Dim D	1950	1400	850



All dimensions are approximate.

If you have any further questions, please contact our Sales Team.